

Ref. : VGDEFLECV90.pas

Rev. : B

Date : 25/04/2014

Page : 1/1

# VEE 90° DEFLECTOR VGDEFLECV90



**Tecofi**  
VALVE DESIGNER - FRANCE

## APPLICATION

General use : Protect the body; avoid product penetration in the dead parts of the body and allows flow regulation.

## GENERAL CHARACTERISTICS

Range : from DN 50 to DN 400.

Vee 90° deflector.

Assembling without body machining.

Assembling with body machining on request.

The deflector should be mounted on the upstream side of the valve.

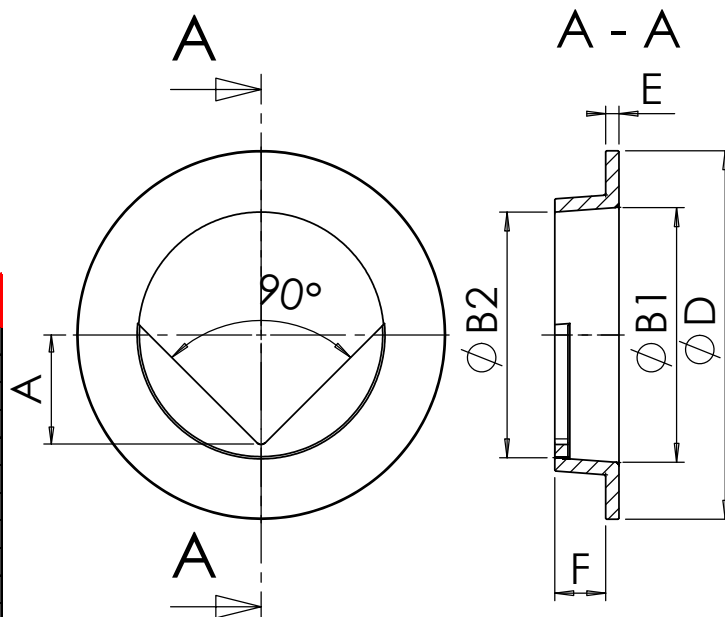


## CONSTRUCTION

| 1    |      | Vee 90° deflector | Stainless steel 316 | DIN: X5CrNiMo18 10<br>ASTM: A 182 AISI 316<br>BS: 970 316 S16 |
|------|------|-------------------|---------------------|---|
| Pos. | Qty. | Description       | Material            |   |

## DIMENSIONS

| DN  | A   | ØB1 | ØB2 | ØD  | E | F  | Weight (kg) |
|-----|-----|-----|-----|-----|---|----|-------------|
| 50  | 12  | 36  | 32  | 90  | 6 | 18 | 0,35        |
| 65  | 17  | 52  | 42  | 105 | 6 | 18 | 0,5         |
| 80  | 27  | 64  | 58  | 120 | 7 | 23 | 0,75        |
| 100 | 30  | 86  | 72  | 145 | 7 | 23 | 1           |
| 125 | 45  | 109 | 104 | 170 | 7 | 22 | 1,3         |
| 150 | 58  | 135 | 130 | 195 | 7 | 27 | 1,7         |
| 200 | 80  | 184 | 180 | 250 | 7 | 26 | 2,35        |
| 250 | 100 | 231 | 226 | 310 | 7 | 31 | 3,65        |
| 300 | 125 | 285 | 276 | 365 | 7 | 30 | 4,55        |
| 350 | 140 | 335 | 306 | 420 | 8 | 43 | 7           |
| 400 | 160 | 385 | 356 | 472 | 8 | 44 | 8,4         |



## STANDARDS

Raised face according to standard NF EN 1092-1.